

HANA AJIASHVILI



MICHAEL  
GROSS

**3**  
PIECES  
AFTER  
**3** BELOVED PAINTINGS  
BY JOSEPH HACKMEY

DEDICATED TO  
JOSEPH HACKMEY



YEHEZKEL  
SHTREICHMAN



JOSEPH  
ZARITZKY

HANA AJIASHVILI

**3**

PIECES  
AFTER

**3**

BELOVED PAINTINGS  
BY **JOSEPH HACKMEY**

DEDICATED TO  
**JOSEPH HACKMEY**



PAINTING/PIECE

**1**

YEHEZKEL  
SHTREICHMAN

## Video links to the episodes of the piece:

*beginning*

<https://www.youtube.com/watch?v=SmIchXbkG5g>

*episode from the bars 6-7*

<https://www.youtube.com/watch?v=4xOz3WfAzhs>

*episode from the end*

<https://www.youtube.com/watch?v=wwuCX5i3L-I>

## Recording of the piece ( performed by Hagai Yodan)

<https://soundcloud.com/hagai-yodan/hana-ajiashvili-three-pieces-after-beloved-paintings-hagai-yodan-piano>

This piece must be performed by 2 liquor glasses on the strings of piano, from the beginning the glasses must be placed between **F** and **Bb** of the first octave like at the following picture:



# Painting 1

## Yeheskel Shtreichman

### Composed especially for Joseph Hackmey

*dedicated to pianist Hagai Yodan*

**Hana Ajiashvili**

$\text{♩} = 72$  **Rubato**  
**Senza pedal**

7' **accel.** **rit.** 3'

*strong gliss. down the string* *to the top (highest) of the strings*

*gliss.* *gliss.*

**a tempo** **molto accel.**  $\text{♩} = 92$  **Add pedal gradually, and not all the time**

4 18' 23'

*gliss.* *gliss.* *gliss.*

*gliss.* *gliss.* *gliss.*

*gliss. and shake the glasses strongly on the strings*

*long and fast strong gliss. down the strings*

*mad and very fast shaking and gliss.*

6 30' 34' 36'

*shake up-down and right-left same time*

*fff* *fff*

**Agitato Molto**  
**A lot of pedal**

*strong "throw down or up gliss" with mad shakes*

*38' and slides to different directions combining with circular motions as randomly and as mad and as fast as you can*

\* move the glasses in opposite directions

**Senza pedal**

10 45'

50'

**accel.** . . . . . **rit.** . . . . .

*pp* < > < > < > < >

slow gliss.  
up

*fp* > *mp* > > >

slide down the strings slowly with glass creak

**Quiet and soft**

12 54'

**molto rit.** . . . . .

*pp* gliss.

slide down the strings slowly with glass creak

*p* > > >

HANA AJIASHVILI

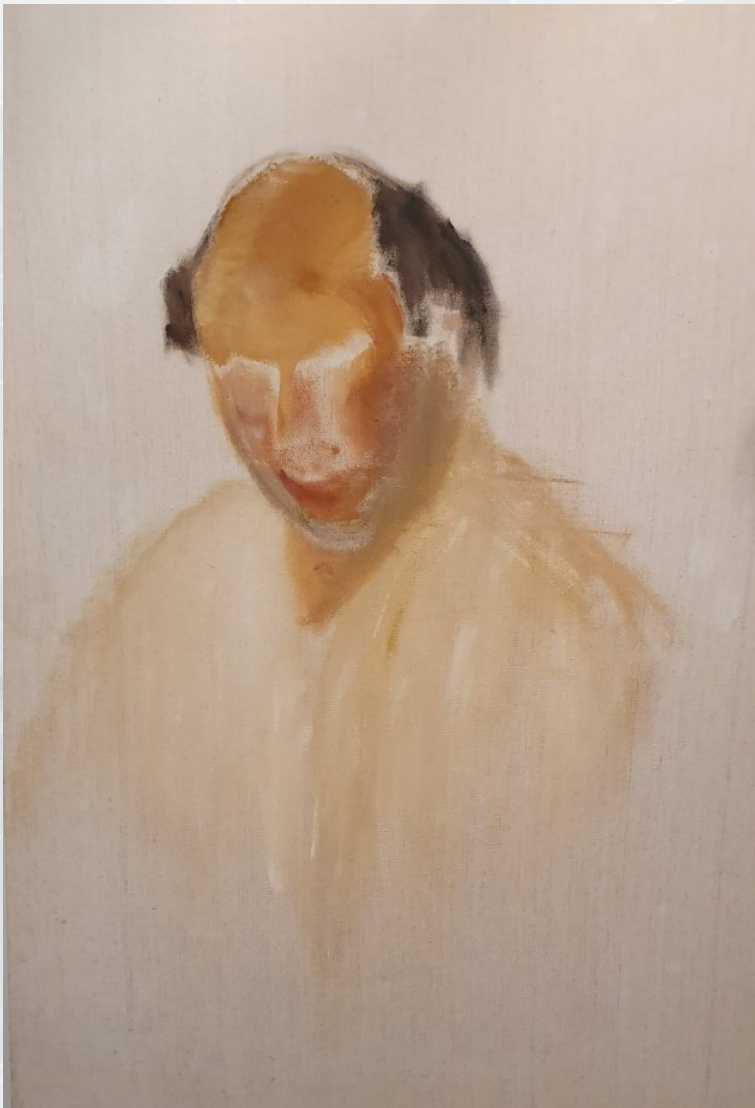
**3**

PIECES  
AFTER

**3**

BELOVED PAINTINGS  
BY **JOSEPH HACKMEY**

DEDICATED TO  
**JOSEPH HACKMEY**



PAINTING/PIECE

**2**

MICHAEL  
**GROSS**

## Notes:

1. prepared duct tape on the strings between f 2 to a 3
2. accessories: thick paper, then stick ( metallic or wood)



# Painting 2

## Joseph Hackmey

### by Michael Gross

*dedicated to Joseph Hackmey*

Hana Ajiashvili

*mute the strings, move position of the hand which mute the string higher and higher to get different overtones*

*Overtones on the string with right hand*

♩ = 72

Piano

*p*  
Ped. \_\_\_\_\_ Ped. \_\_\_\_\_ Ped.

4

Pno.

Ped. \_\_\_\_\_ Ped. *sf* \_\_\_\_\_ *p* \_\_\_\_\_ Ped. \_\_\_\_\_

ord. without mute

6

Pno.

*sf*  
*p* \_\_\_\_\_ *sf* \_\_\_\_\_ *p* \_\_\_\_\_ Ped. \_\_\_\_\_ Ped. \_\_\_\_\_

\*\*\* prepared duct tape on the strings between f 2 to a 3

7

Pno.

♩ = 76 *Overtones on the string with right hand*

Ped. \_\_\_\_\_ Ped. \_\_\_\_\_

9

Pno.

*p* \_\_\_\_\_ *mf* \_\_\_\_\_ *f* \_\_\_\_\_ Ped. \_\_\_\_\_

Free overtones by muting the string on different places. accel. . . . . 5 5 rall..

\* mute the string almost at the end of the pitch's sound

\*\* mute the string in the "middle" of the pitch sound

♩ = 72

♩ = 82

put thick paper between  
f1 and a1 until  
bar 18

Pno.

11 *mf* *sf* 3 Ped. Ped. Ped. Ped.

Pno.

14 3 3 p Ped.

Pno.

16 3 3 3 p Ped. Ped. Ped.

Pno.

19 *pp* *p* Ped. Ped. Ped. Ped. 3 Ped.

mostly muted pitch,  
only percussion  
sound

Free overtones by mutting  
the string on different places.

Pno.

22 *sf* *f* *f* 3 3 Ped. Ped. Ped.

♩ = 90 ♩ = 100

25  $\text{♩} = 112$

Pno. *f*

Ped. 3

26

Pno. *ff*

Ped. 3

29  $\text{♩} = 72$

Pno. *pp* *p* *mf*

Ped. 3

*mordent muted, only percussion sound*

33

Pno. *sf* *mp* *sf* *p*

Ped. *pp* *mf* *ff* *p*

(8)-----

play with very thin stick (metallic or wood) between the strings.  
 move a stick up and down to get different overtone gliss.

38

Pno. *p* *p* *pp*

Ped. 3

(8)-----

42

Pno.

*knocking on the piano wood*

*p*

*mp*

*8<sup>vb</sup>*

Ped.

47

Pno.

Ped.

**3**

PIECES  
AFTER

**3**

BELOVED PAINTINGS  
BY **JOSEPH HACKMEY**

DEDICATED TO  
**JOSEPH HACKMEY**



PAINTING/PIECE

**3**

JOSEPH  
ZARITZKY

### Ways palying the piece:

1. There are 5 small (any) cymbals on the piano strings and one on the piano stand , you can see their position at this photo. The 3 cymbales ale closed each to other at the middle of the piano - 2 of them at the *first octve*, the 3-rd - *second octave*(area of *g2*), the 4th cymbale at the area of *d#* of the *small octave*, and the 5th cymbale in the low bass of the piano in the area of *d* of the *big octave*.



2. In this piece you gat sounds by hitting the cymbals easily or strongly (depends to dynamic in the piece), to get very fast uncontroled tremolo. Don't stop the cymbals, let the sounds stop by themselves.

3. In the bars 6 and 7 you have to play with the internl part of your palms.

# Painting 3

by Joseph Zaritzky  
dedicated to Joseph Hackmey

at the beginning - the hand is on the cymbals,  
the sound starts when you take off your hand  
very gently ( first 5 "itches")

Hana Ajiashvili

Musical score for Piano and Pedal (Ped.) from 0 to 12 seconds. The score is written for two staves: Piano (Piano) and Pedal (Ped.). The Piano part starts with a dynamic marking of *p* and features several chords with durations of 5", 2", 3", 2", and 3". The Pedal part starts with a dynamic marking of *p* and features several chords with durations of 2", 3", and 2". A vertical dashed line at 12" marks the end of this section. The score includes various musical notations such as stems, beams, and dynamic markings.

Musical score for Piano (Pno.) from 23 to 40 seconds. The score is written for two staves: Piano (Piano) and Pedal (Ped.). The Piano part starts with a dynamic marking of *mf* and features several chords with durations of 23", 25", 26", 28", 30", 32", 34", 35", 38", and 40". The Pedal part starts with a dynamic marking of *sf* and features several chords with durations of 25", 26", 30", 38", and 40". A vertical dashed line at 3" marks the beginning of this section. The score includes various musical notations such as stems, beams, and dynamic markings.

Musical score for Piano (Pno.) and Pedal (Ped.) from 43 to 48 seconds. The score is written for two staves: Piano (Piano) and Pedal (Ped.). The Piano part starts with a dynamic marking of *mf* and features several chords with durations of 43", 45", 47", and 48". The Pedal part starts with a dynamic marking of *ff* and features several chords with durations of 47" and 48". A vertical dashed line at 5" marks the beginning of this section. The score includes various musical notations such as stems, beams, and dynamic markings.

6 52"

Pno.

*fff*

6 6

6 6

play like at the beggining - take off your hand from the cymbal to get sound

1:00 \* \* 1:01 1:06 1:10 1:18

Pno.

7

1:00 \* \* 1:01 1:06 1:10 1:18

\* play with your palms

\*\* the cymbal is on the piano stand, only percussion- wood sound